



The King David High School

The School

The King David High School is founded on traditional Jewish values with a belief in respect, courtesy, self-discipline, diligence and the pursuit of excellence.

The Mission

Our mission is to encourage each and every child to reach the highest levels of academic achievement, creativity and personal development....

The School of Choice

The King David High School has an enviable reputation. Over the past few years the school has undergone a massive transformation and has now become the school of choice for many of the brightest and the best in the Greater Manchester region and beyond.

Its achievements place it among the top comprehensive schools in the country. Indeed, the results of Yavneh and Solomon rank them alongside the very best schools in the independent sector. Its ethos is aptly summarised in the school's mission statement.

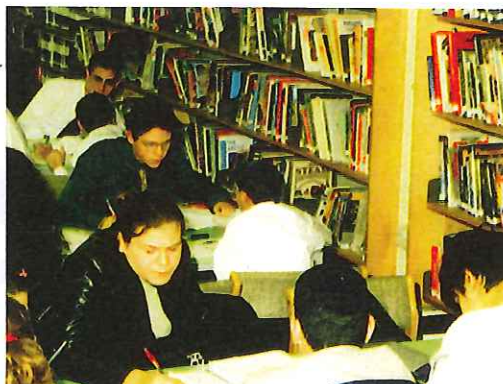
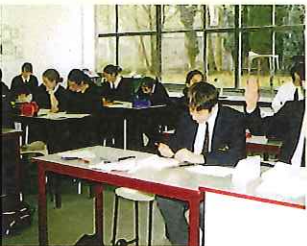
"...Excellence... the pursuit of excellence in every area of the curriculum is our primary aim, so as to ensure that each and every child achieves their maximum potential and beyond, combined with a warm and caring environment and with the teaching and practice of Judaism and its values..."

A Warm and Caring Environment

Alongside the ethos of excellence, academic achievement and personal development, great emphasis is placed on achieving the kind of atmosphere where learning becomes a pleasure and the school an experience to enjoy. The creation of a warm and caring environment is a founding principle of the school. The school goes to great lengths in its care for pupils.

Children are very happy at the school. The creation of an enjoyable learning experience is a noble end in itself. Moreover, children who are happy do well academically. *"...this is a happy school with a sense of purpose, a positive ethos, moral code and conduct... pupils are courteous, friendly, well motivated and enthusiastic... relationships are excellent..."*

(Ofsted)



A Sense of Pride

The King David High School forms part of the King David Campus, which caters for around 1400 pupils from the Creche, through the Infants', Junior and High schools to the Sixth Form.

The school has achieved remarkable academic success with its unique streaming system centred around the 'elite' Yavneh and King Solomon classes and the King Saul 'grammar school' class.

The school is in effect a 'grammar school' in that it sets children with their academic peers and combines this with an ethos of achievement. On the other hand it retains the social advantage of a broad and balanced intake. It is a grammar school in comprehensive clothing. It has taken the best from each system and offers the best of both worlds.

This is a school which sets standards, both in terms of academic achievement and in terms of personal conduct and development.

The school operates an 'open door' policy and encourages a strong teacher/pupil/parent partnership to provide a unique educational experience.

With well-defined policies on such issues as discipline, dress code and homework, the school is setting the highest standards.

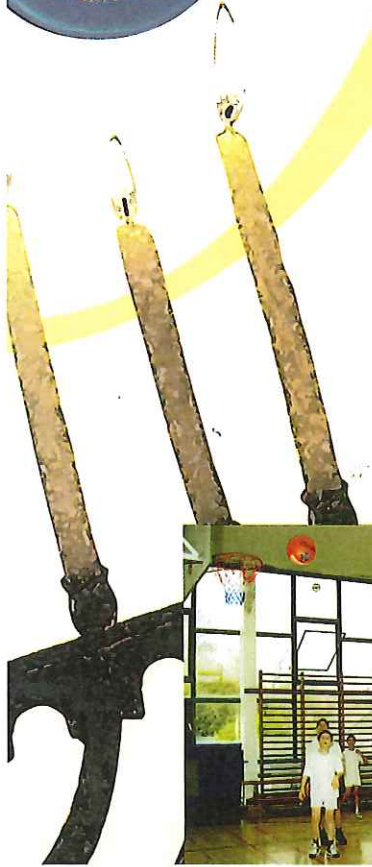
A Dedicated Team

The teaching staff consists of over 90 highly qualified and dedicated teachers, specialising in their own academic disciplines and at the same time committed to the development of a rounded personality, through the encouragement of a wide range of extra-curricular activities.



Children are the Future

*values and standards that embody the
past, the present... and the future*



History has shown that Jewish continuity has always been predicated on Jewish education and knowledge. Without knowledge there is no pride, without pride there is no commitment and without commitment there are no Jews.

Research also shows that Jewish communities, which do not have their own strong secondary schools, simply decline.

Today, there is no doubt that we are living in a world which is hostile to many of the fundamental Jewish values; family life, respect for parents, teachers, elders and fellow men. There is also a lack of respect for standards, discipline, morality, faith and tradition.

If there is to be a vibrant Jewish community in Manchester fifty years from now, it is vital that Jewish children attend a Jewish school such as The King David High School.

Strong Jewish education is imperative so as to imbue children with the knowledge of and pride in their heritage and identity. This gift will enable them to face the world with confidence, in the firm knowledge of who they are and where they stand.

The school promotes the values, standards and discipline which are essential for children who are destined to become leaders of the Jewish community... and beyond.



Realizing the Potential

Not every child has the same natural academic ability, but every child has potential. The school's role is to inspire and ignite the flame of interest and ambition and to cultivate talent in order that each child can realize their full potential.

*"Every child is a treasure...
our role is to unlock it..."*

At The King David High School outstanding levels of success have been achieved by following well-established principles. Provide the best and most committed teachers. Challenge every pupil to maximize his or her potential by stretching them within competitive peer groups. Give pupils a sense of pride in their work, in their achievements and above all, in themselves. All this combined with a caring, warm and friendly atmosphere where children enjoy school.

This is a formidable combination which generates an inspiring learning environment.

Academic, sporting, social or vocational, The King David High School brings out the best in its pupils.



A Unique Educational Experience

Yavneh is the name given to an exclusive educational unit developed by the school which provides a modern orthodox education at secondary level.

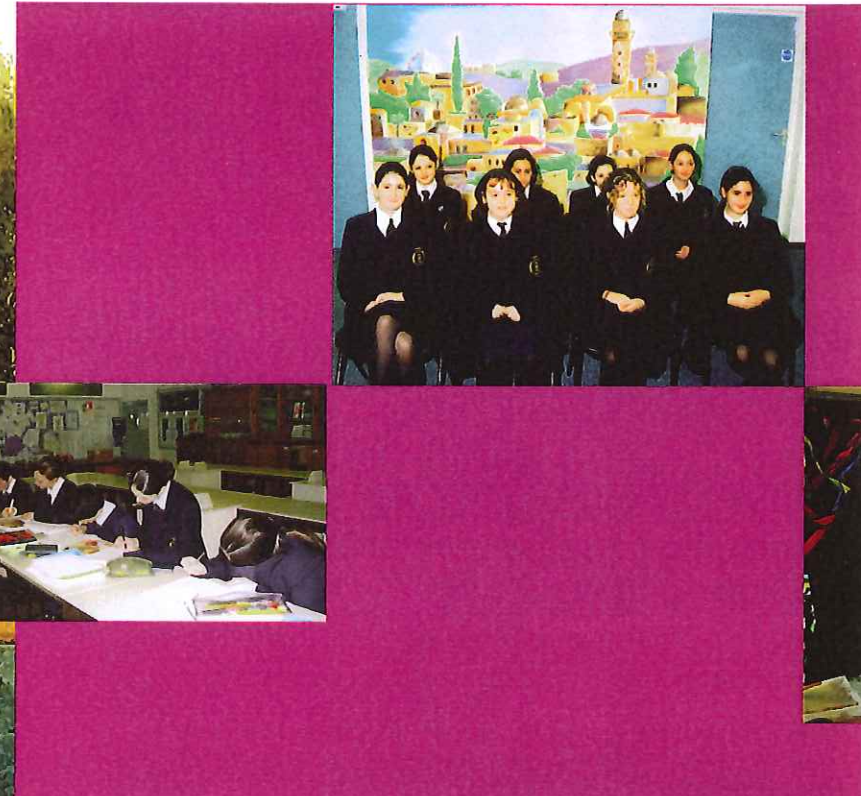
Yavneh adopts the approach of Torah im Derech Eretz as its guiding principle. It encourages a commitment to and an appreciation of Judaism and its values. The teaching of Torah, Derech Eretz, good Midot, Jewish learning, Halacha and Ivrit together with the centrality of the State of Israel is its principle aim.

"...The atmosphere in Yavneh is one of exceptional co-operation, purpose and joy..." (Ofsted)

The pursuit of excellence is a primary objective of this prestigious unit. The standards of the secular curriculum and the Jewish studies programme are designed to enable pupils, on graduation, to enter the very best seminaries and universities.

A Yavneh graduate will be 'at home' in the world of Jewish learning and observance, and equally 'at home' in Cambridge, Oxford

This elite unit demands a very high standard of achievement from its pupils





or any of the other centres of academic excellence. A Yavneh graduate is 'at home' in two worlds.

In addition to academic achievement, there is a strong emphasis on the development of good character. Pupils are encouraged to show concern for others both within and outside the school.

Charity and social projects are an important and integral aspect of school life.

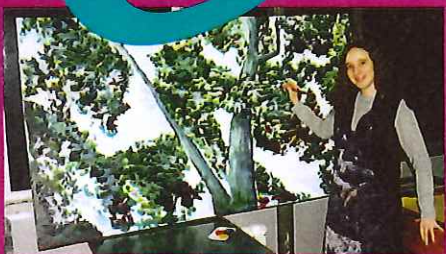
This elite unit demands a very high standard of achievement from its pupils and since its inception has proved remarkably successful in accomplishing its goals. Yavneh has drawn pupils from a wide range of backgrounds and locations who have chosen it in preference to schools in the independent sector. Results achieved by pupils attending Yavneh now regularly equal those achieved by the most highly rated schools in the independent sector.

Admission to Yavneh is by an entrance assessment examination and by standards of religious observance and practice, as well as high standards of personal conduct.



Yavneh

the elite units



An elite unit for academic high flyers

The Wisdom of Solomon

The school believes that in the academic subjects, pupils must be streamed and set.

Solomon is the class for the most academically gifted children. These children, taught with their own peer group, encourage and inspire each other to achieve great heights in a competitive atmosphere.

The pace set for the Solomon Class is very demanding and the impressive results attained by its pupils (*together with those from Yavneh*) are now equalling the very best in the independent sector.

Admission to the highly selective Solomon Class is by a rigorous entrance assessment which examines pupils in Mathematics, English, the Sciences and Jewish Studies. In addition, for admission into this unit, pupils have to demonstrate high standards of personal conduct.

King Solomon

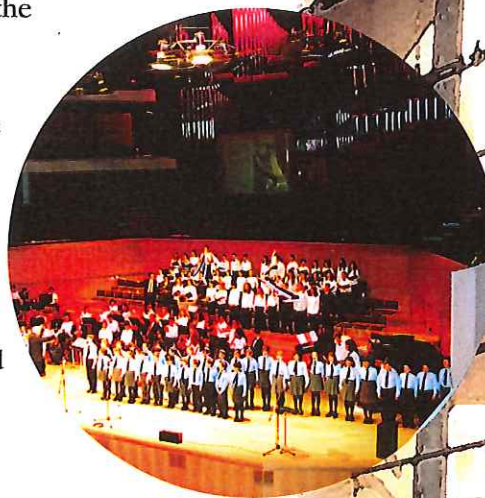




Children who excel in the school's bi-annual examinations may be promoted to the higher academic streams, including Solomon.

Solomon graduates are expected to progress to higher education and to enter the very best universities, including Oxford and Cambridge.

The Solomon Class has proved to be an outstanding success. Its pupils have responded magnificently to its challenging, competitive and demanding environment and it has become the unit of choice for many of the brightest and the best in the community.





Ensuring Maximum Achievement

There is another traditional academic stream operating within the school. It is called the Saul Class and was established for pupils who attain 'grammar school' standards.

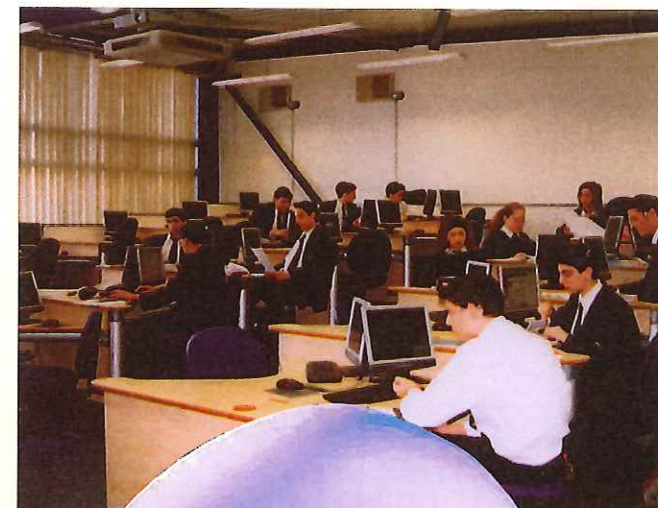
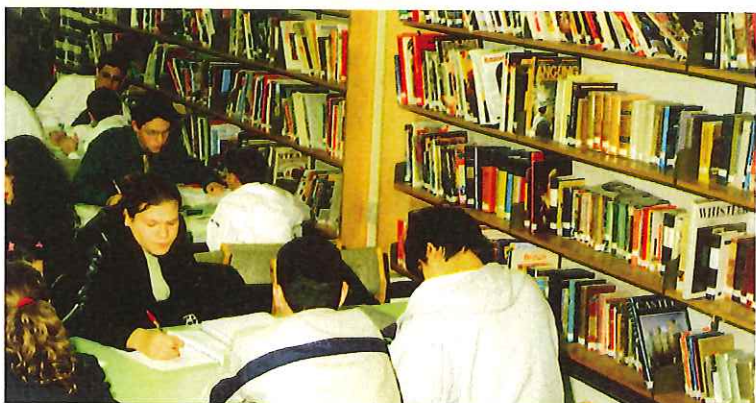
Pupils placed alongside their peers, following educational programmes designed to match their abilities, respond well to the challenge and reach high levels of attainment.

Standards are rigorous and progress within the class is rapid.

Admission to the 'grammar school' class is by an entrance assessment examination which tests pupils' aptitude in Mathematics, English, the Sciences and Jewish Studies. High standards of personal conduct are also a requirement for admission.

Pupils in the Saul Class are expected to achieve excellent GCSE qualifications and to progress successfully through the Sixth Form to gain a place at a good university.

King Saul





King David

This important class is designed to maximise the potential of every child. The King David Class is for pupils destined for success, though not necessarily through the traditional academic route.

The courses created for this stream are designed to enable pupils to go on to achieve significant success both in higher education and in the competitive world of industry and commerce.

Every child is encouraged and stretched to their maximum potential and most pupils achieve results well beyond their expectations, going on to attain success in higher education.

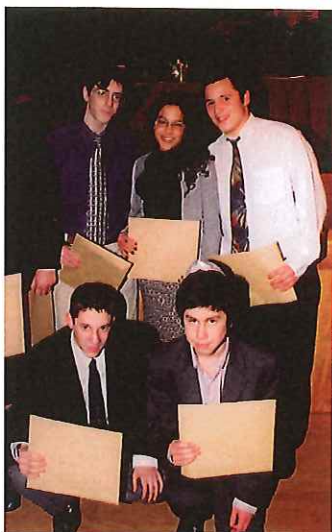
Admission to this class is by an entrance assessment examination in Mathematics, English, the Sciences and Jewish Studies. In addition, high standards of personal conduct are required for admission to this class.

Fluid streaming and setting

Throughout the school, the streaming and setting is fluid. Pupils may move up or down between the various classes. Such a move is dependent on their academic aptitude and achievement.

Pupils develop at different times and at a differing pace and the flexibility of the system allows the school to respond appropriately.

In all classes, and particularly in years 10 and 11, emphasis is placed on additional setting for particular subjects. This enables pupils to maximize their potential and enhance their confidence in areas of academic strength.



Sixth Form

A Stage for Success

Housed in its own purpose-built block, the Sixth Form sets a seal of quality on the King David Campus.

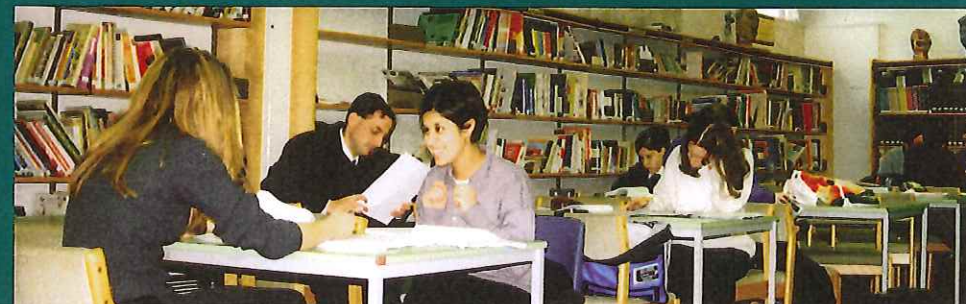
The unit encourages students to excel in their studies. Established a number of years ago, it offers a disciplined, controlled and unique Jewish environment for all its students.

The Sixth Form has its own dedicated staff which includes subject teachers, class tutors and mentors, all of whom assist students throughout their course.

The Sixth Form has enjoyed much success in obtaining places for its students at universities of their choice. It has established good contacts with many universities and colleges of higher education.

The Sixth Form provides a structured advisory scheme to support students in their application to universities and other institutions of higher learning. Careers advice and work experience form an integral part of the curriculum.

The mentor system is a unique feature of the Sixth Form. The system provides one-to-one tuition and guidance as part of its on-going assistance to students. It helps to motivate students and provides a platform for an exchange of ideas. It also prepares students for the style of teaching found in some universities.





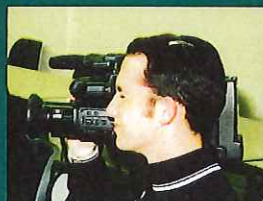
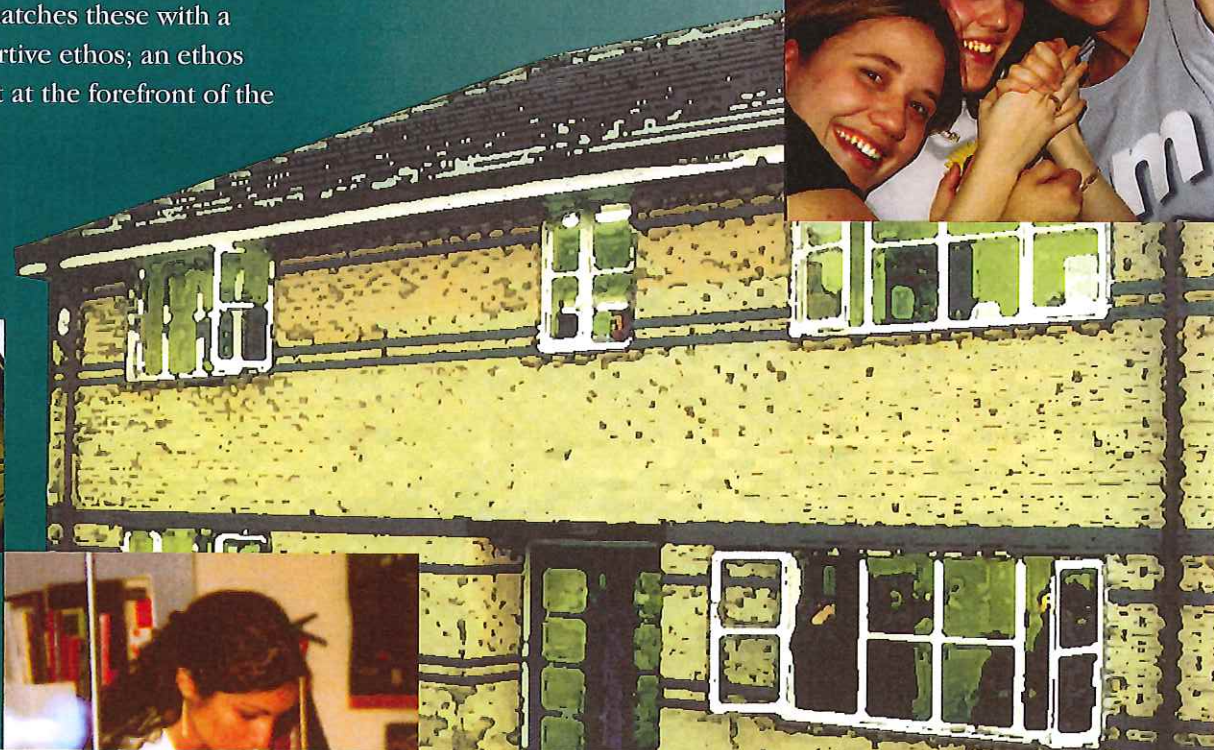
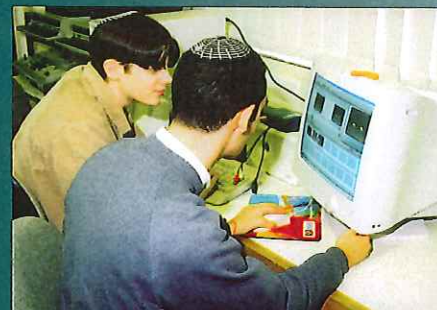
The future leadership of our community and beyond...

The Sixth Form is the link between school and advanced learning, in universities and other institutions of higher education.

Sixth Form students are expected to be the 'role models' for the lower school. They are the prefects and the 'pace setters' for the school and its ethos. Likewise, King David Sixth Formers are expected to take future leadership positions in the community and beyond.

For this reason, admission to the Sixth Form is based as much on personal attributes as on academic ability.

The unit makes great demands of its students in terms of academic achievement and personal conduct, but matches these with a warm, caring and supportive ethos; an ethos which places the student at the forefront of the school's priorities.



The Curriculum

*It reflects the needs of the students,
and the expectations of society*

11 - 16

The curriculum developed within The King David High School reflects the needs of today's students as well as the expectations of higher education authorities and prospective employers.

GCSE

Although ever-evolving, the current curriculum includes the following subjects which are taught up to GCSE level: English Language, English Literature, Mathematics, Religious Studies, Biology, Chemistry, Physics, Geography, History, French, Modern Hebrew, Classical Hebrew, Spanish, Latin, Computing (Information Technology), Business Studies, Drama, Art & Design, Graphics, Music, Design & Technology and Food Studies.

Applied GCSE's

The curriculum also includes courses in Personal and Social Development, Business, Travel and Tourism, Computing (Information Technology).

Sixth Form

The Sixth Form has a broad-ranging curriculum which currently includes:

A-Level

English Language, English Literature, Mathematics, Further Maths, Physics, Chemistry, Biology, Computer Studies, Information Technology, Religious Studies, History, Geography, Government and Politics, Business Studies, Media Studies, Art, French, Spanish, Modern Hebrew, German, Food Studies, Dance and Music, and Psychology.

VCE

Business Studies, Science, Computing (Information Technology) Travel & Tourism and Media.

Computers, Science & Technology

The future belongs to the computer literate...

The school places great emphasis on computers and their related technologies and has long been at the forefront of their use throughout the curriculum and age range. The school is very well equipped with the latest state of the art computers and 'Inter-active Electronic White Boards'. In addition, the school now boasts four purpose-built IT suites with computer and Internet facilities, which are used as a 'multi media' teaching facility for a range of academic subjects. The school has seven fully equipped science laboratories for tuition to GCSE and A levels.



Judaism & Jewish Studies

The practice and teachings of Judaism is the *raison d'être* of the school. Assemblies include prayers. The ethos and the very high standards of personal conduct of the faith, are the foundations upon which the school stands. These are taught and practised throughout the school.

In an age when youngsters are searching for identity, we have it...

Our mission is not merely to create the best school, but to create the best Jews.

The academic courses include the Chumash, Halacha, Siddur, Nach, Talmud and Jewish History. The course leads to GCSE and allows students to continue through to A and A/S Level.

In Yavneh, a significant percentage of curriculum time is devoted to Jewish studies, which are at the highest level. In the Main School, all students follow a standard course which is somewhat less demanding. However there is a wide range of additional courses available through the Limudei Kodesh clubs and through the Bet Midrash programme which enables students to study Jewish studies and Ivrit for up to 16 periods per week. These additional courses are designed to enable students, who so wish, to attend seminars and yeshivot before commencing their university education.

Sports & Physical Education

A healthy body, a healthy mind...

A wide range of sporting activities is available at the school, both as part of the curriculum and as extra curricular activities. Sporting events foster teamwork, leadership and healthy competition. Sports and physical education enhance pupils' well being.



*Learning about yourself,
learning about life,
learning about the world*

Extra-Curricular

Over the years, the extra curricular programme at the The King David High School has evolved and offers a wide range of activities, both sporting and social, designed to foster team spirit, initiative, self-confidence, a sense of adventure and fun, and a regard for the community and society as a whole. The programme is an evolving one and currently includes;

Sports. The school has its own indoor swimming pool, football pitch, a flood-lit 'all weather' pitch, tennis courts, fully equipped gymnasium and cricket nets. There are competitive fixtures arranged with other local establishments. The school's football team has had great success in winning league and cup trophies. The school runs swimming competitions, inter-house competitions in net ball, tennis, table tennis, basketball, baseball, rounders, unihoc, cross country and field events.

Other activities include, cricket, badminton, keep fit, self-defence, scuba diving, tennis, chess and weight training.

The Arts. There is a thriving Arts community within the school and the many societies and groups provide a varied programme of activities and events. The school's choir and orchestra participate in concerts at Manchester's Bridgewater Hall, the Royal Northern College of Music and other venues. Other activities include, an art club, dance, drama, public speaking and debating.

Academic Clubs. These include, Mathematics club, Science club, Computer club, French club, Spanish club, Geography club, Ulpan in Ivrit, Siddur club, Limudei Kodesh clubs and the Bet Midrash.



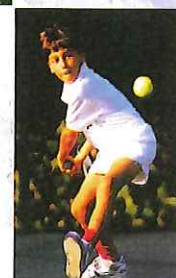
Outdoor Activities. There is a strong emphasis on adventure, resourcefulness, initiative, self-confidence and self-motivation. Included within the activities schedule are; summer camp, Duke of Edinburgh Award Scheme, sailing, trekking, walking and orienteering.

School Trips. There is an on-going programme of school trips and outings designed to complement the curriculum and at the same time stimulate diverse interests. This includes visits to museums, art exhibitions, theatres and concerts.

Overseas Visits. With a long tradition of travel, the school organises a number of foreign trips including visits to Israel, France and Spain and participation in the bi-annual 'March of the Living'.

Community and Charity. A major emphasis is placed on each student's role in society and the community. Regular activities include charity and community based programmes, which are designed to encourage courtesy, politeness and an awareness of the needs of others.

The extra-curricular activities programme is ever-evolving and new opportunities are constantly being considered and introduced.



*Lessons learned at school
create standards that last a lifetime*

Establishing Standards

Homework. Homework is viewed as an essential aspect of the school programme and as a vital part of academic development. The school demands and expects a high standard of presentation, in class and in homework. The homework diary, which parents are expected to monitor and sign, is a valuable link between school and home.

Uniform. School uniform is worn by all pupils in the lower school. The uniform is intended to present pupils at their best and parents are expected to ensure that their children look smart and tidy. Students in the Sixth Form need not wear uniform but must dress suitably within the set school guidelines.

Meals. All meals are prepared in Kosher kitchens under the supervision of the Manchester Beth Din. A varied menu of hot meals, snacks and sandwiches is available from the self-service cafeteria. Soft drinks are available from vending machines.

Discipline. The school respects the individual, and in turn expects the individual to respect their teachers, fellow students and the standards set by the school. Ours is a strict approach to all matters relating to discipline and pupils are fully aware of the standards to which they are expected to conform. The school's code of conduct is based on the exemplary standards set by Judaism and its teachings. The school has a zero tolerance policy on drugs, promiscuity, bullying and insubordination to teachers.

Pastoral Care. The school offers a very supportive, caring and understanding environment, designed to nurture the confidence and abilities of each and every pupil.

Parental Involvement. The level of communication with parents is probably unique. Governors are available to meet parents at any time and provide detailed updates on all aspects of the school. Parents evenings are held regularly and there is a thriving Parents Guild, which organises a wide range of events.





The King David High School

Eaton Road, Crumpsall, Manchester M8 5DY

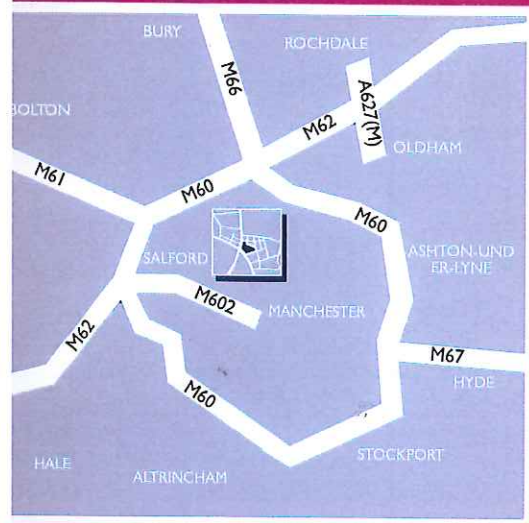
Tel: 0161 740 7248

Fax: 0161 740 0790

e-mail: kingdavidhigh@aol.com

Web Page: www.kdhs.org.uk

Motorway Links



Perfectly Placed

The King David High School is located alongside a main arterial route approximately two miles north of Manchester city centre.

It lies close to the motorway network and is within a few minutes walking distance from all forms of public transport, including the Rapid Light Transit Metrolink which places the school on a direct connection with all communities from Bury in the north to Altrincham and Hale in the south.

The M62, M66 and the new M60 ensure that even more outlying districts, in Lancashire, Cheshire and Yorkshire are also within a short journey time from the school.



acknowledgements

• Joshua Rowe

gn • Colin Welden 01706 663731

ing • Abbey Mill Design 01254 824873

ct Co-ordinator • Gidon Stemmer

The King David High School The King David High Scho

ing David High School

The King David High School

King David School

High

The King David High School